



LAKESIDE AT GEORGETOWN LAKE CAREFREE CONDOS - ACCEPTING PRE-ORDERS STARTING AT \$ 359,000



Artist rendering, owner reserves the right to change



5 FOX TRAIL WAY - 8 EAST – GEORGETOWN LAKE, MT

- TAKING PRE-ORDERS - 1817 SQ FT 3 BR - 2.5 BTH DELUXE TOWNHOUSE STYLE CONDO
- GREAT VIEWS OF LAKE AND MOUNTAINS - PERSONAL BOAT SLIP AVAILABLE
- PROPERTY AND RENTAL MANAGEMENT PROVIDE CAREFREE LIVING

FOR MORE INFORMATION PLEASE CONTACT ED SILVERSTEIN AND REFER TO CMP#1-10003274M



PRESENTED EXCLUSIVELY BY: ED SILVERSTEIN, REALTOR
EDS@CMPMONTANA.COM

CLEARWATER MONTANA PROPERTIES, INC.,
13,902 1/2 HWY 1, GEORGETOWN LAKE, MT 59711
MOBILE 406-498-6290 OFFICE 406-563-2612 FAX 866-558-4883
WWW.CMPMONTANA.COM [WWW - GEORGETOWNLAKEMT.COM](http://WWW.GEORGETOWNLAKEMT.COM)

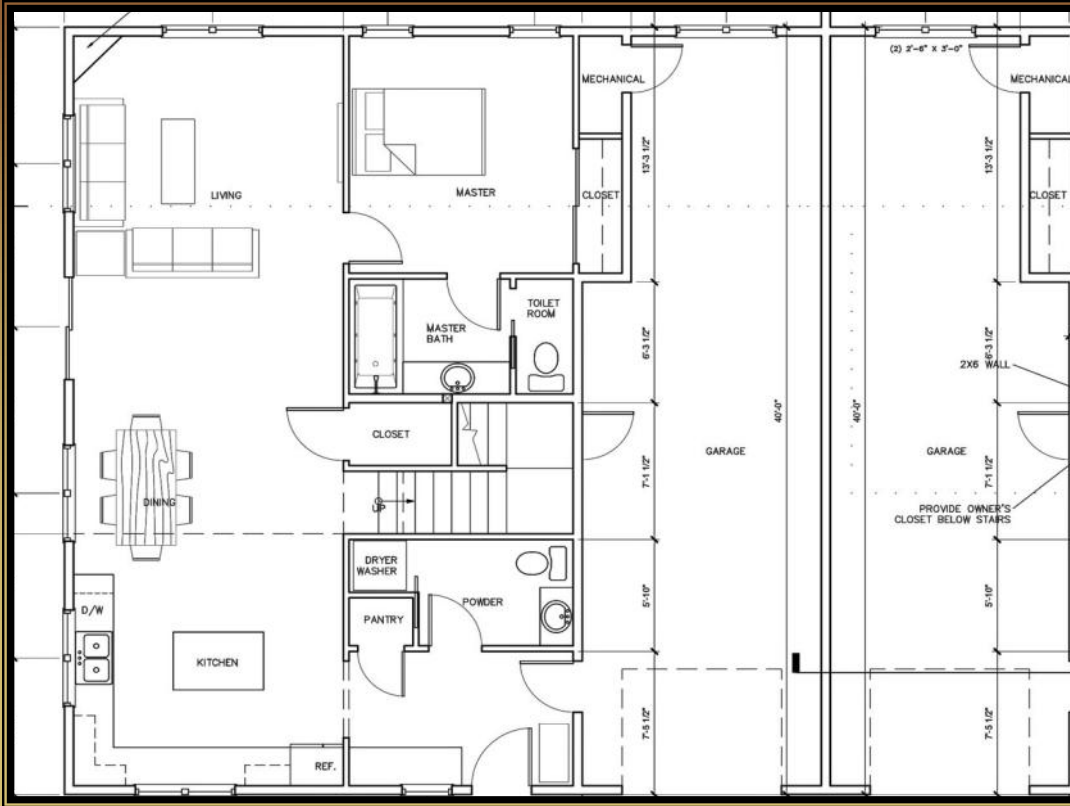


LAKESIDE AT GEORGETOWN LAKE

CAREFREE CONDOS - ACCEPTING PRE-ORDERS

STARTING AT \$ 359,000

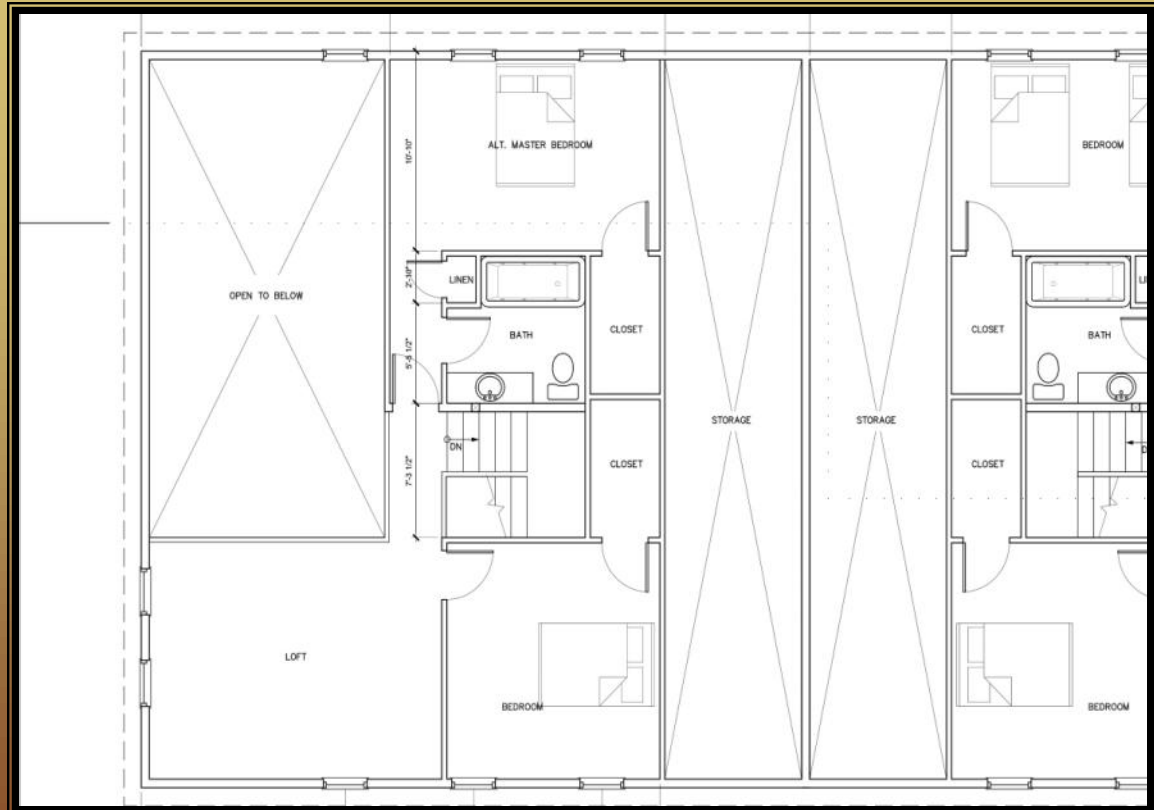
MAIN FLOOR



THESE STUNNING TOWNHOUSE CONDOS OFFER EVERYTHING YOU COULD WANT IN A LAKESIDE HOME. 1817 SQ. FT. WITH 3 BEDROOMS 2.5 BATHS. THE TWO CAR IN LINE GARAGE OFFERS PLENTY OF ROOM FOR ALL YOUR TOYS. AND BECAUSE THE HOMES ARE SEPARATED BY THE GARAGE, YOU'LL NEVER EVEN KNOW THERE IS ANYONE NEXT DOOR. MANY OF THE UNITS HAVE SPECTACULAR VIEWS OF THE LAKE AND ALL HAVE PROFESSIONAL MANAGEMENT SO YOU CAN ENJOY CAREFREE LIVING AND NEVER HAVE TO WORRY ABOUT YOUR PIPES FREEZING IF THE POWER GOES OUT OR WAITING FOR A PLUMBER ON YOUR VACATION. IF YOU WANT TO EARN SOME EXTRA INCOME TAKE ADVANTAGE OF OUR SHORT TERM RENTAL SERVICE.

GEORGETOWN LAKE, THE MOST PROLIFIC FISHING LAKE IN MONTANA, IS JUST STEPS AND AN EASEMENT PROVIDES ACCESS TO A FOREST SERVICE TRAIL SYSTEM THAT ALLOWS YOU TO HIKE, BIKE, HORSE BACK RIDE, 4-WHEEL OR SNOWMOBILE FOR MILES AND MILES. FULL PRICE OFFER GETS A CHOICE OF A FREE SNOWMOBILE, ATV OR JET SKI. EXCITING DISCOVERY SKI MOUNTAIN AND TOP-RATED JACK NICKLAUS DESIGNED OLD WORKS GOLF COURSE ARE ONLY MINUTES AWAY. THIS IS TRULY A RECREATIONAL PARADISE. WHETHER YOU ARE LOOKING FOR A SEASONAL OR VACATION HOME OR A CAREFREE PRIMARY RESIDENCE THE CONDOS AT LAKESIDE AT GEORGETOWN LAKE HAVE IT ALL AND ALL FOR JUST A FRACTION OF THE COST OF A LAKE FRONT HOME.

2ND FLOOR





LAKESIDE AT GEORGETOWN LAKE CAREFREE LUXURY LOTS STARTING AT \$199,000



LOT 10 - 5 MARINA VISTA LANE GEORGETOWN LAKE, MT

- EXCLUSIVE .55 ACRE LOT - SPECTACULAR VIEWS OF THE LAKE
- PERSONAL BOAT SLIPS AVAILABLE JUST STEPS AWAY
- AREA EXCLUSIVE PROPERTY & RENTAL MANAGEMENT OPTION FOR CAREFREE LIVING

FOR MORE INFORMATION PLEASE CONTACT ED SILVERSTEIN REFER TO CMP# 1-10003272M



PRESENTED EXCLUSIVELY BY: ED SILVERSTEIN - REALTOR

Eds@CMPMONTANA.COM

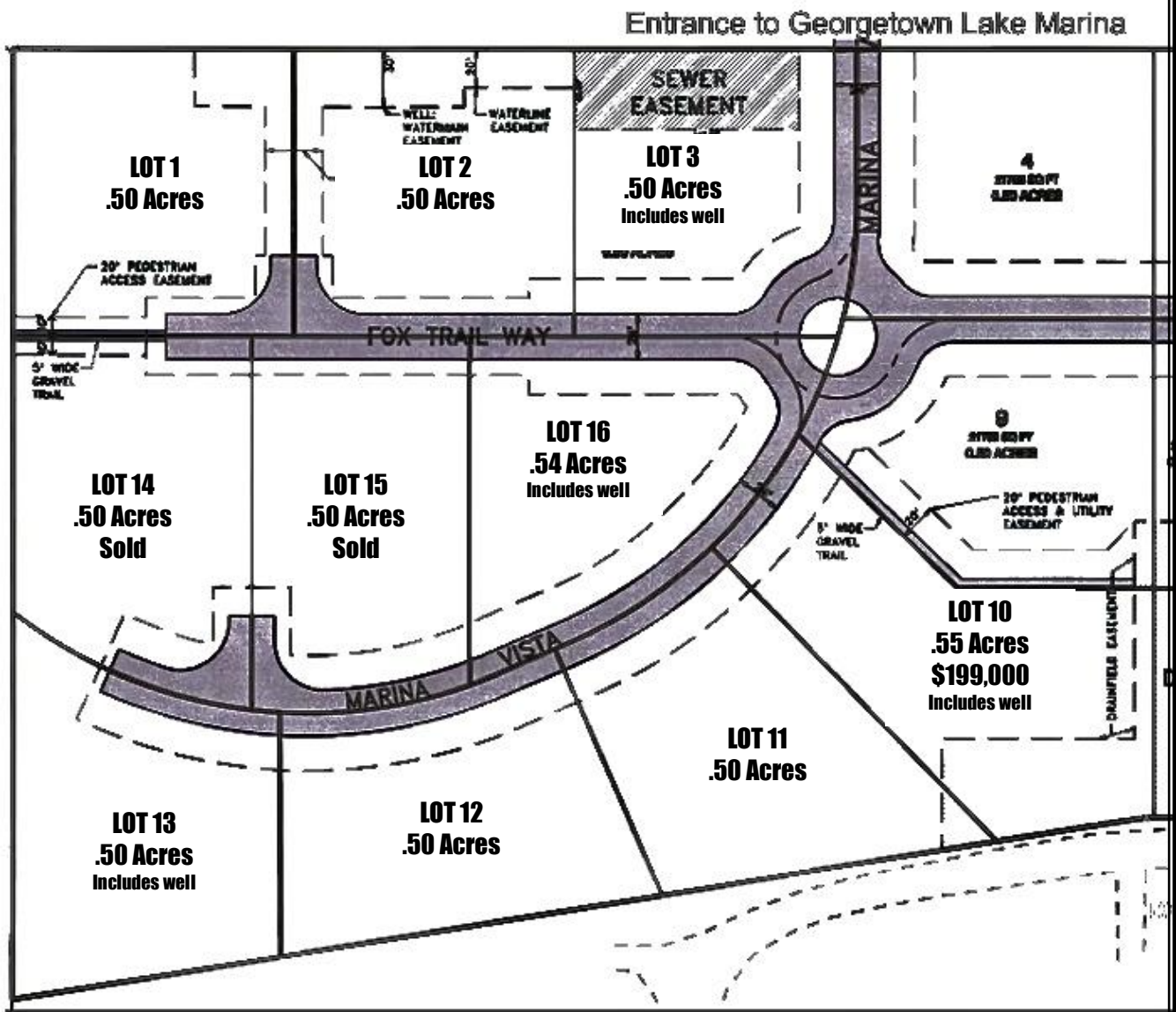


CLEARWATER MONTANA PROPERTIES, INC.
364 BROWN DERBY LANE, GEORGETOWN LAKE, MT 59858
MOBILE 406-498-6290 HOME 406-563-2612 FAX 866-558-4883

WWW.CMPMONTANA.COM - WWW.GEORGETOWNLAKEMT.COM



LAKESIDE AT GEORGETOWN LAKE CAREFREE LUXURY LOTS STARTING AT \$199,000



Information is deemed to be reliable, but is not guaranteed. Buyers and their agents are encouraged to conduct due diligence, and to verify to their satisfaction, the information contained herein regarding property. This information is provided by outside sources and deemed reliable but not guaranteed by the Brokerage Firm, its agents nor representatives, nor the Listing Agent.